

113 DISH*

Wood, with red and black pigment,
bone inlays

35.2 (13 7/8) LONG

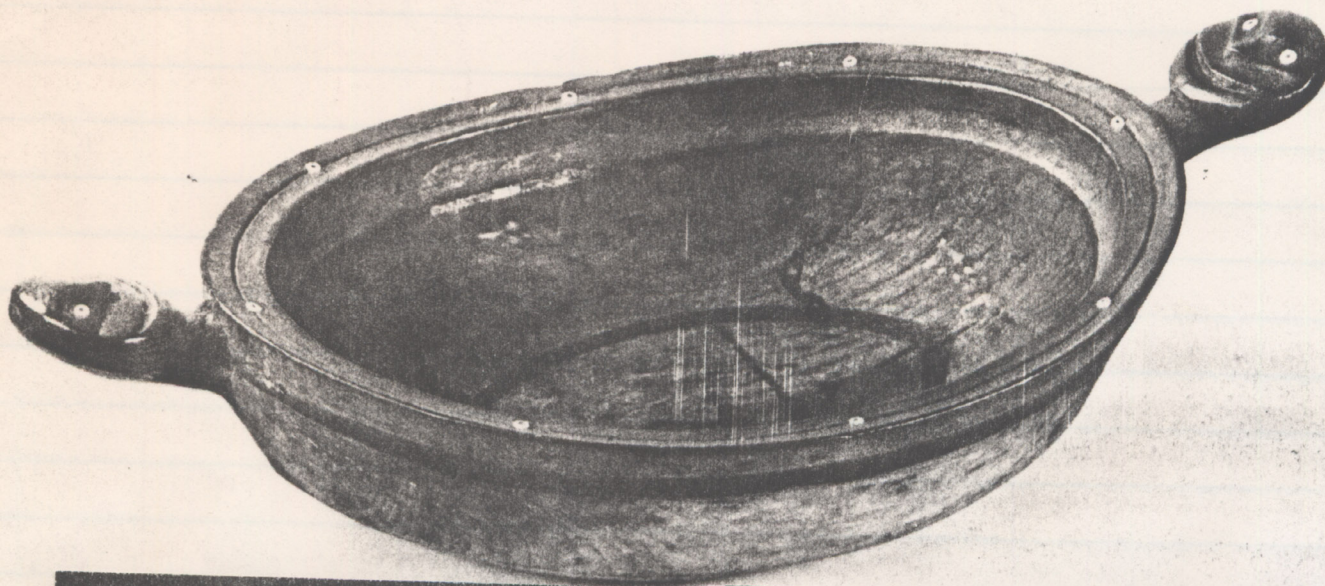
Collected in the "Big Lake" region.

Yukon-Kuskokwim Delta, by E. W.
Nelson

Smithsonian Institution, 38 677

Two human heads are shown, with
an outline drawing of a mythical
creature. No. 114 shows only a
mythical creature.

Bureau of American Ethnology, *18th Annual
Report*, (1899), part I, pl. XXXI-8, p. 80.



64 HUNTING HAT

Wood, pigment, ivory ornaments, sea
lion whiskers, and trade beads

38 (15) LONG

Aleutian Islands or Kodiak

Museum of Anthropology and

Ethnography, Leningrad, 4104.7

